

GROVE VINE

**The Magazine of
Grove Methodist Church
Horsforth, Leeds**

December 2017 and January 2018



**The Grove Methodist Church is called to respond to the Gospel
of love in Jesus Christ and to live out its discipleship in
worship, service and mission**

Minister – Rev Mark Godfrey

Phone: 0113 258 2678 or email: revmgodfrey@gmail.com

Regular events

Sunday

- 10.20 Creche (0-3yrs) 0113 258 3509
- 10.20 J Team (tots to 12s) 0113 293 6745
- 10.30 Worship
- 6.00 Worship (see page 4 for the appropriate church)

Monday

- 12.00 Luncheon Club 0113 258 3807
- 1.30 Network Women's Fellowship 0113 258 9448
- 6.15 Beavers 0113 250 6786 and Cubs 0113 250 6786
- 7.45 Scouts 0113 250 6786
- 7.45 Flower Guild (3rd Monday in the month) 0113 258 4520

Tuesday

- 9.00-9.30 Prayer Group in the Quiet Room 0113 258 8803
- 10-11.30 Coffee in the Centre Small Hall 0113 440 6480
Quiet Room available for prayer.
Jean Kemp's hand- made greetings cards are available on the first Tuesday of each month.
- 6.00 Rainbows (5th Horsforth) 0113 259 0555
- 6.15 Brownies (5th Horsforth) 0113 258 3670
- 7.45 Guides (5th Horsforth) 0113 202 9010

Wednesday

- 2.00 Line Dancing 0113 258 7444
- 6.00 Rainbows (14th) 0113 258 5519
- 6.15 Brownies (14th) 0113 250 4907
- 7.30 Wednesday Break (fortnightly) 0113 225 2734
- 8.00 Explorer Scouts 0113 258 0882

Thursday

- 9.30-11.30 Tots & Tykes (0-4yrs) 0113 293 8458
- 11.00 Bible Fellowship 0113 258 3239
- 6.00 Cubs 0113 250 6786
- 6.15 Beavers 0113 250 6786
- 7.45 Scouts 0113 250 6786
- 7.45 Ladies' Group (1st and 3rd Thursdays) 0113 258 2097

(Continued on outside back cover)

Minister's Letter

Dear Friends,

Christmas is a time of celebration, of that there is no doubt. It is a joyful and happy time. It is a time for putting up trees and decorations, meeting up with family and friends, giving presents, buying plenty of food and drink. They all add up to make Christmas the biggest celebration of the whole year.

But why do people celebrate Christmas? For many years now it has been clear that the religious side has been losing importance; commercialism has been swamping Christmas. A recent survey showed that 80% of people didn't think Christmas was a religious celebration. We might well ask where is Christ in Christmas?

And yet he is still there and can never be hidden. I'm often reminded of this when I look at Christmas decorations in shops. Many of the decorations are Christian symbols.

One symbol that is often used is the star. The star is very much a Christian symbol. It reminds us of the star that guided the wise men and showed them the way to Jesus.

The bell is another symbol often used at Christmas time. That's another symbol with very long Christian associations. Bells have been used to call people to worship for centuries.

Another symbol we see a lot at Christmas time is the candle. We often see candles forming part of the decorations in shops and in streets. The candle is a very important Christian symbol, it points to the central truth of Christmas. The candle brings light in place of darkness. At Christmas we celebrate the birth of Jesus, the light of the world.

That is the central truth we celebrate at Christmas. The birth of Jesus is the proof that God really does love us and care for us. I pray that this Christmas we may each be aware of God's love which is the best reason of all for celebrating.

Jenny joins me in wishing you a very happy Christmas and every blessing in the New Year.

Mark

Thought for the month

Love is always demonstrated best when it's shown to the least privileged.
Ngcebo Mbuli, from Swaziland

Church Family News.....

From the Church Registers

5th Nov: Baptism of Layla Joanne Hall daughter of Gary and Amy

8th Nov: Funeral of Cynthia Mary Quayle

Please remember in your prayers all those known to us and who face a variety of difficulties; bereavement; health problems; anxiety about loved ones and loneliness.

Services in December

3 rd	10.30	Rev. Keith Hunt
	6.00	United Service at St Margaret's
10 th	9.00	Rev. Mark Godfrey – Holy Communion
	10.30	Rev. Mark Godfrey – Toy Service and Parade
	6.00	United Service at Woodside
17 th	10.30	Mrs Jean Orton – Nativity Service
	6.00	Rev. Mark Godfrey – Carol Service
24 th	10.30	Rev. Peter Reasbeck - Holy Communion
	6.00	Mr Phil Maud – Christingle
25 th	10.30	Rev. Mark Godfrey
31 st	10.30	Mrs Kirsty Butler

Sunday Services in January

7 th	10.30	Rev. Mark Godfrey – Holy Communion
	6.00	United Service at Woodside
14 th	9.00	Rev. Mark Godfrey – Holy Communion
	10.30	Mr Phil Maud - Family and Parade
	6.00	United Service at Trinity
21 st	10.30	Rev. Roger Walton – Church Anniversary
	6.00	Rev. Godfrey Nicholson
28 th	10.30	Rev. Mark Godfrey
	6.00	Rev. Mark Godfrey – Taize Service

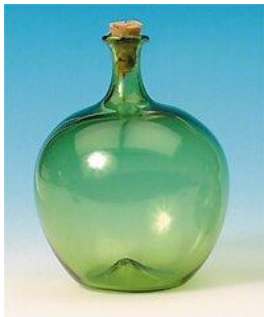
Stewards on Duty

December

3rd Trish and Margaret
10th Carole and Caroline
17th Michael and Kath
24th Kath and Michael
25th Phil and Margaret
31st Carole and Michael

January

7th Phil and Kath
14th Margaret and Trish
21st Caroline and Carole
28th Michael and Margaret



Carboy Appeals

Thank you to those who gave £101 for Yorkshire Air Ambulance via the carboy in October. The cheque is sent and they are very grateful for our gift. As usual the folks at the Grove continue to give generously and I wish to thank you.

Trevor Fox

December: The Royal British Legion

We continue to be grateful for your generous contributions to the Carboy, to the memory of the fallen and the future of the living. The November issue of Grove Vine gave details of its foundation. Today, it provides life long support for the Armed Forces Community; the serving men and women, veterans and their families.

Still very much needed in 2017 and in 2018 we shall remember 100 years after the end of the First World War. I would be very grateful if you could dig deep into your pockets and help this Appeal.

Beryl Thompson

January/February: Mercy Ships

About fifteen or more years ago while on a caravan holiday in the Wirral, we went to Birkenhead Docks where we happened upon a Mercy Ship. We were invited aboard to look around and were amazed at the whole Christian ethos of it.

Mercy Ships is a faith-based international charity that operates the largest non-governmental hospital in the world. The *African Mercy* travels to some of the poorest countries in Africa, offering free, safe medical care to people who otherwise wouldn't be able to access it.

Mercy Ships also train local healthcare professionals, renovates facilitates and works closely with governments and other NGOs to ensure that lasting change is brought to every country it visits.

474 Crew Capacity

82 Patients' Beds



Voluntary teams of nurses, doctors, surgeons, and other crew members from all over the world, together have helped transform the lives of more than 2.56 million people in the poorest countries of the world since 1978.



Five operating theatres on board provide an annual capacity of approximately 7,000 surgical procedures including cataract removal/lens implants, tumour removal, cleft lip, palate reconstruction and orthopaedics.

As this is a charity organization it relies heavily on donations from the public. We have supported this ever since we saw the amazing work these people do in some of the poorest parts of the world.

Thank you for donating your loose change to this wonderful worthy cause.
Brian and Mitzi Whitham

Call to mind the deeds and wonders of old. . . . !

Trust the Psalmist to get to the heart of the matter! "I will call to mind the deeds of the Lord; I will remember your wonders of old." (Ps77:11) This poet knows how crucial it is to remember God's blessings, all the mighty things that have happened over the years, and he urges us to do the same. Now that's where anniversaries come in. Whether it's the 1st, 21st or 61st, anniversaries are important occasions. The best of them has a resonance and meaning that helps us to recall, reflect and renew. They are milestones in the cycle of life that are as vital for congregations as they are for individuals.

2018 marks the 222nd anniversary of Methodist witness by the people called The Grove and the 150th from its home site in the present building. So a significant year that calls for celebration.

Mention celebration and most people will bring to mind parties or, as the Oxford dictionary puts it, festivities, social or community gatherings. Careful not to overlook this, it is intended that there will be three fellowship lunches across the year: the first on **Sunday 21st January**, when we recall the opening of our current building in our 150th anniversary service led by the Rev'd Dr Roger Walton, President of Conference 2016 – 2017 and Chair of our West Yorkshire District; the second on **13th May**, our 222nd anniversary, following morning worship led by the Rev'd Dr Neil Richardson, President of Conference 2003 - 2004; and the third, coupled with a Gift Day, on **2nd December**, after our closing service of the anniversary year, led by our minister, the Rev'd Mark Godfrey.

Of course, it wouldn't be a special year if we didn't remember how we have grown and changed over time, and so, each month (except August when people seem to be on holiday!), between the first anniversary service, communion on **7th January**, and the last communion service in December, there are opportunities for special anniversary worship. Usually this is to be on the first Sunday of the month and led in turn by each of our past ministers or current supernumeraries. Plenty of opportunity to appreciate our common heritage, identify how far we have come and recall the strengths and achievements that have formed our witness for over 200 years. Something of this is encapsulated in an anniversary brochure celebrating the history of the current building that has been specially written to mark 2018.

Reflection is built in to all our special anniversary worship but just in case anyone feels it has been missed out, 'Creation: A Celebration', an awe-inspiring exhibition of 22 frames containing embroidery, paintings and multi-media pictures has been booked on special loan from the

Bible Society. Whilst this is launched at a church open weekend on **12th - 13th May**, Bible Society experience tells us that visitors return to the exhibition time after time as they muse and meditate on the exhibits and so it will run at The Grove for a couple of weeks. To enhance the opening it will be complemented by a display of church memorabilia, a stained glass windows and flower arrangement walk and, for those who are young at heart, a teddy bear trail around the church. On the following **Saturday, 19th May**, the exhibition will be the setting for another multi-media production, 'The New Creation' with its wide variety of musical styles and many catchy melodies, written and narrated by Brian Hoare, President of Conference 1995 – 1996, and presented by the Knaresborough Choral Society & Orchestra.

Anniversaries can run the danger of marking time by becoming occasions to dwell at length on nostalgia and past glories. It is very much hoped that the 2018 celebrations will give the church a good opportunity to prepare for renewing its vision, time to recognise its strengths, look forward to how they might be built upon and identify new areas for mission. For this reason the year begins on **7th January** with a communion service for 'Times of Renewal' led by the Rev'd Mark Godfrey and ends on **2nd December** with a closing communion service based around thanksgiving and dedication, again led by our minister.

A large part of any renewed service and mission is about looking outwards and making connections with neighbours near and far, and so it is planned that the year should also be marked by two other key features. Beginning in March The Grove will host an Anniversary Concert Series aimed at attracting anyone and everyone who might appreciate a wide range of musical styles.

On **17th March** our own Grove Choir starts the musical programme with a production of 'From Pharaoh to Freedom', written by the widely acclaimed Christian composer, Roger Jones. The Choir will bring to life through great songs, the story of the Israelites exodus from Egypt. Other presentations follow at regular intervals.

21st April: An evening with The Sheffield Citadel Salvation Army Band.

19th May: Production of 'The New Creation' by Brian Hoare, presented by the Knaresborough Choral Society & Orchestra.

14th July: The Grove Picnic Concert with entertainment by Peter Reasbeck, Mitzi Whitham and The Grove Orchestra.

13th October: Harvest celebrations with The Aires & Gracenotes accompanied by Peter Reasbeck.

1st December: Christmas Tea with the Wesley Singers.

Hopefully, our programme will be completed with other entertainment yet to be arranged, including: an evening with Simon Lindley to celebrate the completion of our newly refurbished Rushworth and Dreaper organ and an opportunity to meet Dr Paul Whittaker OBE, deaf musician and choir leader.

As a balance to outreach within the immediate neighbourhood, throughout the celebrations there will be an opportunity for the church to reach out to neighbours who are somewhat further afield. The Grove Methodist Mission Project already exists in the form of a donations account used to fund the educational work of village children in Uganda through the oversight of church member, Shirley Crawford. The church's charity outreach across 2018 is aimed at supporting other aspects of need in the same area and thereby having a positive impact on a group of people living on the edge.

All of this requires the interest, support and, at times, voluntary help from as many people as possible. Together we are the church and that makes everyone welcome to join any and all events and to suggest other ways that the church might celebrate its milestone year. Together we can make 2018 memorable!

Anniversaries matter! 2018 is not just the chance to celebrate together the history that has formed us into who we are, but also a good moment to recall our strengths and successes, an opportunity to reflect on what should now change and a time to prepare for renewed commitment to the next stage of our service and mission to Horsforth. The Psalmist would recognise that all of this merely reflects what lies at the heart of his intentions, "I will meditate on all the Lord's work, and muse on His mighty deeds." (Ps77:12). So might we all.

Anniversary Committee: Rev'd Mark Godfrey, Kath Ashby, Kay Bassett, Anne Blackburn, Jean Douglas, Cynthia Hatton, Christine Mathers and Peter Mawson.

Peter Mawson

Carols in the Park - Sat 9th December 4.00 - 4.30pm



Carols under the stars with a hot drink, a mince pie and glow sticks for children.

Offers of mince pies, or help with refreshments or stewarding will be gratefully received by Jean Orton and Phil Maud

Spring Bulb Sales

This annual opportunity to raise money for the Church and Scout Group started in 1976, when Bryn Chappell, a Methodist in Spalding, advertised in the Methodist Recorder. Bryn retired about 10 years ago, and passed his mailing list to Gee-Tee bulbs, a large organisation with a Dutch background, a lovely catalogue and an impressive website, also based in Spalding.

We regularly order about £300 worth of bulbs, and make a profit of about £200, from a customer base of about 30 families.

I have been involved in this process for 40 years, and am now going to cease! I am willing to pass on my experience to anyone who wishes to use this venture to fundraise for any charitable cause. Please speak to me if you want details.

Keith Whitham



Solutions to the November 2017 Puzzles

Wordsearch: Bethany, Bethlehem, Bethphage, Bethsaida, Caesarea, Cana, Capernaum, Egypt, Emmaus, Galilee, Gethsemane, Gennesaret, Jericho, Jerusalem, Judea, Nain, Nazareth, Sidon, Sychar, Tyre.

Jumbled words:

FINER MESH	FISHERMEN	OUTER SIGH	RIGHTEOUS
MOON PANIC	COMPANION	SHEAR PIES	PHARISEES
STONY TIME	TESTIMONY	PET RESCUE	PERSECUTE
SPARE LADY	PARALYSED	CUTE FIELD	DECEITFUL
SIDE CLIPS	DISCIPLES	SOUTH SAND	THOUSANDS

Messy Church



We meet on the second Saturday of each month during term time but not on 9th December as we shall all be going to Carols in the Park. There will, however, be the opportunity for children to enjoy lots of Christmas Activities at our special morning session on 19th December (10.00 - 12.00) in the activity Room.

My Favourite Christmas Music



I have been playing the oboe for quite a long time now – I started in my state grammar school aged fourteen. I had peripatetic music lessons every week. When I was good enough, I joined amateur orchestras in Dorset, where I lived. As a school child I was playing oboe with doctors, teachers, lawyers and accountants. I felt very grown up! One of the first concerts that I was involved with was the Weymouth Choral Society. I was sixteen and this was my first experience of Handel's "Messiah".

Handel's "Messiah", totally blew me away. I was completely captivated by the whole experience of choir, orchestra and soloists – and having bright attractive choruses to accompany on my oboe. I fell in love with the music and for many days after the performance the melodies and harmonies were repeating in my mind.

George Frederick Handel composed his "Messiah" in 1741. It is an English Oratorio and has 53 movements in all. It is scored for soloist singers, a chorus with sopranos, altos, tenors and basses. The orchestra is 2 oboes, 2 trumpets, timpani, 2 violins, viola and cello part with harpsichord.

Handel's "Messiah" takes its text from the King James Bible and the book of Common Prayer. It is in 3 parts. Part 1 is based on the prophecies of Isaiah and also features the shepherds. Part 2 is all about the Passion of Christmas, ending with the Hallelujah Chorus. The third part is set on the Resurrection and Christ's glorification in Heaven.

I have always loved the music of Handel. I have played in "Messiah" many times over the years. I always love it. There are the most beautiful arias for the soloists accompanied by the strings. The choruses are a great "sing" for choirs and are technically challenging. The oboes tend to accompany the vocal lines – mostly the sopranos and altos. Trumpets and timpani are mostly used for heraldic choruses, although the aria "The Trumpet Shall Sound" uses a trumpet and 2 oboes to great effect in accompaniment.

I love the structure of Handel's music. It is architectural, full of shapes and the architecture is like wonderful baroque buildings – full of ornate stonework. Each piece of music takes the listener on a journey through many musical keys. The different keys and the underpinning harmonies give the music colour and shape, expressive phrasing and nuance. Handel is wonderfully expressive and a joy to play and sing in.

A Christmas always feels right with Handel's "Messiah". This piece of music has been at the centre of my musical life for nearly forty years. It is a wonderful, most inspiring piece of music and it is my favourite piece of music for Christmas.

Liz Kenwood

To all our friends at The Grove

**Wishing you a Christmas
filled with the
special warmth of friendship,
the precious joy of sharing,
and the wonderful love of
Jesus**



Instead of sending individual Christmas Cards to you all, we have made donations to our favourite charities:

Alzheimer's Society; Arthritis Care; Arthritis Research UK; Barnardo's; Breast Cancer Research; British Heart Foundation; Cancer Research UK; Cats Protection League; Children's Liver Disease Fund; Christian Aid; Compassionate Friends; Crisis; Diabetes UK; Downs Syndrome Association; Flying for Life (MAF); Gideons; Grove Methodist Church; Guide Dogs for the Blind; Hope and Homes for Children; Imperial Cancer; Joseph's Appeal; Kidney Research UK; Laura Crane Youth Cancer Trust; Leprosy Mission; Marie Curie Cancer Care; Martin House; Mercy Ships; Methodist Relief and Development Fund (All We Can); MHA; Multiple Sclerosis Society; Muscular Dystrophy; Myeloma and Leukemia; NCH Action for Children; NSPCC; Oxfam; PDSA; Physionet; Pituitary Society; Prostate Cancer UK; REAP(Rural Extension with Africa's Poor); RNIB; RNID; RNLI; Salvation Army; SCOPE; Shelter; Smile Train; St George's Crypt; Take Heart; Target Ovarian Cancer; Wheatfields Hospice; Yorkshire Air Ambulance, and Yorkshire Cancer Research.

Philip and Carole Abel; Kath Ashby; Ann Bailey; Barbara Bainbridge; Brian and Margaret Ball; Alan and Pam Beck; Bill and Morag Black; Anne Blackburn; David and Barbara Buckley; John and Kathryn Bussey; Harry Castle; Barbara Collis; Jean Douglas; Eric and Linda Douglass; Carol Emmott; Alan and Sharon Firth; Trevor and Jean Fox; Ken and Betty France; Bill, Lynne and Sam Gill; Anthony and Rita Grainger; Peter and Christine Harding; Brian and Wendy Hartley; Cynthia Hatton; Ricky and Christine Hearn; Margaret Heaton; Dave and Shirley Hodgson; Graham and Carol Hoyle; Elaine Hudson; Albert and Gill Jewell; Nev and Joan Kaye; John, Susan, Juliet and Laura Kitching; Lizzie Lambert; Ian and Pauline Low; Gill and Andrew Marley; Eileen Marsey; Phil and Allison Maud and family; Peter and Janette Mawson; Joan Maylor; Gordon and Mary Mellor; Jack Myers; Trevor and Jennifer Newby; Vera O'Hara; Tony and Jean Orton; Mel and Dorina Overson; Gladys Pagden; Sylvia Parker; Tom and Jean Payne; David and Margaret Pontefract; Madaleine Price; David and Pauline Quick;

Elaine Ramsden; Peter Reasbeck; Roswyn Revell; Chris and Christine Seller; Paul Shagouri; Sheila Shippey; Ruth Symons; Judi Swales; Kath Taylor; Howard and Beryl Thompson; Paul, Louise, Ben and Richard Thompson; Chris and Caroline Turner; Andy Walker; Michael and Janet Wallis; Helena Watkins; Samantha, Richard, Jamie and Toby Walker; David and Evelyn Whiteley; Brian and Mitzi Whitham; Keith and Trish Whitham; Betty Wigglesworth; Margaret Wilks

Is there a little bit of Moses in all of us?

During June's Parade Service, Peter Mawson commented on Chapter I of St James' Epistle and in particular regarding "Doers of the Word". He pointed out that we should not just "Talk Talk" but more importantly, as Christians we should "Walk Walk" for the Lord.

Yes it is OK to do the Walk Walk when you have taken on a job at Church, but are you like me whenever I have been approached? I immediately feel I want to say 'no'. My favourite person in the Old Testament is Moses. He said 'no' on several occasions when asked by God, but in the end he did the Walk. Alright, it did take him 40 years to lead the Israelites to the Promised Land but he succeeded against all the odds.

So, when you are asked, be positive. As Moses found out there is someone much greater than us all who is happy to assist. *John Bussey*

p.s. I intended that this article should appear in the July/August edition, but due to some reluctance on my part, there has been a *little* delay!



You are invited to join with us in a Memorial Service to fondly remember our dear friends at **Horsforth Live at Home** who are no longer with us. The service is open to all who would like to come along and spend some time in reflection. It will be held at the Grove Methodist Church on Monday 29th January at 1.30pm. Those of all faiths and none are cordially invited. Refreshments will be available after the service.
Elizabeth Driffield (Community Programme Co-ordinator)

Christmas Puzzles

E	M	A	R	Y	Y	E	K	N	O	D	I
S	C	J	E	Q	H	V	I	Z	E	N	B
N	E	E	G	Y	X	E	U	A	N	W	E
E	N	S	Y	O	A	J	R	N	U	E	T
C	S	U	P	A	L	E	R	O	C	S	H
N	U	S	T	M	V	D	T	A	D	L	L
I	S	T	A	B	L	E	L	A	K	E	E
K	Z	G	B	R	O	O	M	S	M	G	H
N	I	U	A	S	P	Q	P	N	S	N	E
A	Y	T	A	K	E	R	E	G	N	A	M
R	S	H	E	P	H	E	R	D	S	G	S
F	H	R	R	Y	M	H	P	E	S	O	J

Nativity Wordsearch

Twenty key words which tell the story of the Nativity are hidden within the grid. Can you find all of them?

Christmas Hymn Quiz

What is the first line of the Christmas hymn or carol from which these lines have been taken?

- 1 As we watched at dead of night, lo, we saw a wondrous sight.
- 2 Of her, Immanuel, the Christ was born in Bethlehem, all on a Christmas morn.
- 3 Cradled in a stall was he with sleepy cows and asses.
- 4 Son of God, O how bright love is smiling from your face.
- 5 We hear the Christmas angels, the great glad tidings tell.
- 6 Happy were those shepherds listening to the holy angels' word.
- 7 As with joyful steps they sped, Saviour, to thy lowly bed.
- 8 Like Mary, let us ponder in our mind, God's wondrous love in saving humankind.
- 9 Born thy people to deliver, born a child and yet a king.
- 10 Peace on earth, good will to men, from heaven's all-gracious king.

Tony Orton

I saw three ships come sailing in, on Christmas day ...

Oh, did you go to the seaside for Christmas?

No, I haven't finished. I was singing a Christmas carol.

But why do you want to sing it now?

Well, I like it. It's got a catchy tune.

Right! Let me hear more, then. How does it go on?

'I saw three ships come sailing in,
On Christmas Day, on Christmas Day;
I saw three ships come sailing in
On Christmas Day in the morning.'

It's a bit repetitive, isn't it? There's really only one line. But what comes next? Just the gist please, with no repeats, or we'll be here all day!

'And what was in those ships all three?'

Good question! So what's the answer?

It's in the next verse: 'Our Saviour Christ and his lady'.

Hang on a minute! There's nothing in the Bible about Jesus going on a boat trip. And who is 'his lady'? And why three ships? Why not just one?

I think 'his lady' refers to his mother, Mary.

What! That can't be right! How could Jesus be going on a boat trip with his mother? This whole thing sounds ridiculous. What comes next?

'And they sailed into Bethlehem.'

Oh, come on now! That's just ridiculous! This carol gets more and more stupid! Bethlehem has always been completely landlocked, so it doesn't make sense, you idiot!

Well, I'm only telling you what the carol says.

But, this is too incredible for words ... Jesus wasn't delivered by boat. It was, we assume, quite a normal delivery. Tell me what comes next.

'And all the bells on earth did ring.'

Ah! At last something familiar! There's always bells in Christmas carols. I don't know how Mary and Joseph ever got any sleep, with a baby to look after, and all those bells ringing all the time. What's next?

'And all the angels in heaven did sing.'

Lovely! Though I expect they made quite a racket too! But I've just had a thought - you never told me why there were three ships. The only 'three' in the nativity story is the three gifts - gold, frankincense and myrrh. And I suppose that's why we assume there were three wise men ... who arrived on camels ... wait a minute ... camels are called ships of the desert, aren't they? That's it! It really means, 'I saw three camels come sailing in'.

No it doesn't! But the three ships are to do with the three wise men.

How?

There is a legend that the remains of the three wise men were taken to Byzantium, and then later to Milan, and finally to Cologne, where it is claimed the skulls still remain, believe it or not, in the cathedral.

So, ... do you think this legend and the stories of the nativity and the wise men have all got mixed up in the same carol?

Yes, it is thought that, in the legend, the magi have been replaced by

Christ himself. The carol has been around a long time, so there's been plenty of opportunity for people to mess around with the words.

And are there any more verses?

'And all the souls on earth did sing.'

Yes! As long as there's a catchy tune, most of us will sing anything, even if the words are a bit dodgy. Is that the end?

There's just the last verse: 'Then let us all rejoice, amain!'

Right. Not much more to be said then, is there? Except 'Amen', or 'amain'!

Tony Orton

1868 and My Connection with the Grove History

I am happy to be part of a committee who, throughout the year has been carefully preparing the celebrations of 150 years of existence of the Grove, since its opening in 1868. Each person in the committee has been following through a special area of church life and what is possible or probable to demonstrate before the public, what the church has done and is still doing during these years.

I chose to write the history where the Grove is the central focus. I am aware that I am in a unique position to do so. My connections with the Grove go back 200 years or so, through my ancestry. My great-grandfather William Willoughby, was born in Horsforth in 1836 – the year before Queen Victoria ascended the throne. As far as I know, his parents, from the early 1800s attended the first church in New Street. Since then, the family line has been unbroken in attendance. Amid about 20 relatives I can think of, I am the last one as a church member.

My great-grandfather's 4 children were all brought up starting at the first church, then moving to the Grove in 1868. Great-

grandfather was one of the 9 lay representatives, as a trustee on the committee of 12 in 1835, who voted to build a new church. Two other representatives from 2 other branches of my family also joined that committee. My grandfather in Rodley and my father were both Grove trustees and Circuit Stewards and attended meetings in later years to support the ongoing proceedings.

Having lived in the same house all my life and being of the 4th generation following those already mentioned in the property, I am totally aware of who they were and what they did. I owe them grateful thanks for their knowledge of local and national Methodism, transferred to me in many different ways, since I was born. I have inherited memories of their opinions and comments. I have their Victorian books and documents, their Bibles, hymn books and oratorios as they were a musically talented family.

Another aspect of history that I have lived with is to do with my father, his brother and my stepmother. They were all students of history at Leeds University after 1918 and all of them taught the subject afterwards. The house is still full of history books which naturally have influenced me from my childhood. I studied history at University but had to transfer to modern languages which themselves revealed much historical thought.

These then, are the main reasons why I chose to write the history of the Grove, hoping that it will enlighten the readers as to why we are about to celebrate with joy, the existence of this church.

One hymn that has just now great resonance with me is in Hymns and Psalms, comes with the set tune “Luther” – a name in recent news bulletins of a great protestant leader:

“We come unto our fathers’ God;
Their Rock is our salvation;
The eternal arms, their dear abode,
We make our habitation;
We bring thee Lord, the praise they brought;
We seek thee as thy saints have sought
In every generation.”

Thomas Hornblower Gill

Christine Mathers

Fortune favours the courageous!.....or.....

The Grove Methodist Mission Project 2018

Ever heard the proverb, "Fortune favours the brave?" A better interpretation might be, "Fortune favours the courageous". Ever realised just how fortunate we are? "We are lucky to live in Horsforth!" That was the remark made in a conversation that I had a couple of weeks ago. As is so often the case these days, we were talking about health matters and how much we valued the accessibility of NHS services. Despite the waiting; the queues; the journeys to hospitals, aren't we fortunate in Horsforth to have the health service on our doorstep? "Welcoming", "Friendly", "Lovely people", "Not cliquy", "A chance to chat with friends", "Caring", "Very community centred", "The feeling of belonging to a family with the one great thing in common". These were some of the comments made about The Grove a couple of years ago when we surveyed the views of people coming onto the church premises. Aren't we fortunate to be part of The Grove Church?"

We are indeed fortunate to live where we live and to be part of a church community with all the benefits of fellowship and mutual support. 2018 is a memorable year for The Grove, still here after 222 years of Methodist witness in the area, with 150 in our current building, a comfortable, well-maintained home valued as Grade 11 and listed by Historic England for "its special architecture or historic interest." Please think about it, we have many blessings to count and 2018 is the time to remember them and give thanks.

But just suppose we didn't live in Horsforth! Suppose we weren't fortunate enough to belong to a warm, friendly and supportive church! Imagine living in the village of Pece, 20 mins walk from Gulu the nearest town, the epicentre of the Kony civil war that decimated the area for over 20 years. Any home you might have is surrounded by very poor families living in grass-roofed, mud houses, predominantly inhabited by single mums struggling to feed and clothe, on average, 8 children. HIV/ AIDS and abject poverty are relentless and many of your neighbours cannot afford to send their children to school. Their future is bleak. This is the focus of Shirley Crawford's work in Northern Uganda.

Shirley is a church member who in recent years has worked for the Bradford based, Charity Commission registered, Fathers' Heart Ministries (FHM). FHM seeks to "provide spiritual, physical, educational and emotional care by reaching out to the lost and hurting in society locally, nationally and internationally." Shirley is their Christian voice in this part of Uganda and is involved in a huge task. Currently, she works with 6 viable projects that all respond to local conditions and meet identifiable needs within this specific part of the country. All projects are up and running, are sustainable and make an immediate difference to the community and its people. All the projects need support. They are:

Educational provision for village children - A Fun and Educational Club for 60 + children coming on a weekly basis to Shirley's garden to access books, jigsaws, building blocks, craft, sports, music, making a start on learning early literacy and numeracy skills,

- Juvenile Remand Home - support for adolescent boys and a smaller number of very vulnerable girls held in a remand setting, often with no good reason, with limited access to medicine, food and emotional security,
- Keep a girl at school - at puberty girls often drop out of school and become vulnerable to abuse; the project aims to provide basic needs of underwear, sanitary pads etc., thus overcoming individual difficulties and enabling girls aged 10 – 18 years to stay in the educational system and avoid exploitation,
- Christina's House - a haven for pregnant teenagers; 400 annual applicants but can only take 20 of the worst cases into residential care; seeking to expand day care, desperate for funding,
- Baby Home - Watoto Home for orphans, saving the lives of orphans and the most vulnerable babies and providing the love and care they so desperately need; in need of all kinds of baby resources,
- Mama Kits - in this very poor area with no maternity resources; midwives are in short supply and currently stationed 2 miles north of the village in the Government Clinic. If used, mother must provide ground sheet, sterilised knives for cord cutting, sanitary pads, sterile gloves for midwife, plastic basin for bathing baby, soap, underwear etc., baby towel, new vests ; Often mothers can't provide these necessities and thus have no access. The consequences are the deaths of babies and mothers. £7 covers the cost of the kits and saves lives.

Last year The Grove made donations to help eradicate the poverty trap in Pece and reduce the loss of potential in uneducated children. In doing so it unwittingly created The Grove Methodist Mission Project, a charity account holding our gift, supervised by Shirley, and used to support the education of children reduced to doing household chores, collecting firewood and water, or working to raise funds for their families from the age of 4yrs. So far we have made a contribution to the training of teachers and helpers and the provision of resources. But more is needed and not just in the field of education.

So much of Shirley's work is with babies and young children. Remember the words of our baptism service, "We love, because God first loved us." The corollary is that we are called to give because God has given us so much (1 Timothy 6:17-19). 2018 is *The Grove Anniversary Year* when we celebrate our good fortune with recall, reflection and renewal of our service to the world. As part of that service The Grove Methodist Mission Project 2018 will run across the year focussing every two months on one aspect of Shirley's work.

We are fortunate that for once our charity giving is being channelled through a known worker on the identified mission field, in a specific area of

need that will enable us to receive regular feedback from Shirley as to how any donations we make are being used to effect. We are doubly fortunate that in The Grove Methodist Mission Project 2018 we have an opportunity to work together as an act of celebration by funding the work or by making individual or group links directly with Shirley. In this we will be building upon something that has already begun as Grove people have chosen to commit to regular giving and in the recent past Dorina's Teddy Bear Group has made and sent out much valued baby resources. How much more can we achieve together? On her visit back to Horsforth in December Shirley is willing to talk to the leaders of specific groups such as Scouting, Guiding, Tots & Tykes, Junior Church, Messy Church, whoever, anyone who might wish their group to develop and support particular aspects of the Project. She can even arrange a visit to Uganda similar to the one undertaken by Woodhouse Grove School pupils in 2016. Shirley will open our Anniversary Charity during our opening anniversary service, communion on 7th January 2018.

As a lead in to the first phase of The Grove Methodist Mission Project 2018, in January – February the carboy appeal will focus on Mercy Ships managed by Brian and Mitzi Whitham. This is a worthy cause, an international charity operating the largest non-governmental hospital ship in the world, providing humanitarian aid, like free health care and community development in Africa. Uganda is a land locked country and so will hopefully benefit from The Grove Methodist Mission Project 2018 which will begin with a fund raising luncheon on Sunday 21st January, when we recall the opening of our current building in our 150th anniversary service led by the Rev'd Dr Roger Walton, President of Conference 2016 – 2017 and Chair of our West Yorkshire District. Thereafter, Shirley's work will be the focus of the two-monthly carboy appeal with further details about each aspect as they arise in succession.

“Fortune favours the courageous!” Courageous action is often rewarded. The proverb encourages those who are unsure to commit to something that they might not have seen as their number one priority. Be bold in our anniversary year. Commit to The Grove Methodist Mission Project 2018. You might say, 'Fortune favours the bold.' Who knows, you might even surprise yourself and take a trip out to Pece, 20 mins walk from Gulu, the nearest large town and epicentre of the Kony civil war that decimated the area for over 20 years! At the very least, together we can make a difference to this small part of Northern Uganda.

Peter Mawson





Wesley Road Chapel

Baptist, Methodist and United Reformed Church

Working in a Local Ecumenical Partnership

Wesley Road Chapel came into being in 1987, following the merger of three local churches:

*Armley Central Methodist Church, Wesley Rd,
Armley URC Church, Hall Lane,
and Zion Baptist Church, Hall Rd.*

The tradition here is individual in that the three denominational churches each have contributed towards today's resulting Christian community in Armley. We are called a Local Ecumenical Partnership and work closely with the other churches in this area.

The present Wesley Road Chapel opened in 1987 but worship on the site goes back to 1784 with the building of the Methodist Wesleyan Chapel, in which the founder of Methodism, John Wesley, preached.

A spiritual revival increased the size of the congregation leading to the building of a larger chapel which opened on Easter Monday in 1813. In October of the same year the inaugural sermon for the Wesleyan Missionary Society was preached in Wesley Road. The third chapel was opened in Sept. 1907. This faced on to Wesley Road, whereas entry to the previous buildings was from The Gang.

In the middle of the 20th century the decreasing population in Armley left small congregations struggling to cope with the large, if beautiful, sanctuary so the decision was taken to downsize. The Baptists in Armley joined the scheme and with the sale of their premises and part of the Wesley Road site (for housing), we were able to build a new comfortable, easy to maintain and attractive set of premises. In January 1989 the Armley United Reform Church joined us, so we are a Local Ecumenical Partnership embracing three denominations and enriched by each other's long traditions and histories.

The circuit office is now situated in Wesley Road and a Resource Centre has been created upstairs and offers a rich mix of theology, liturgy and lectionary resources to assist preachers and leaders of worship. It is also an ideal setting to hire for meetings and conferences.

Our worship is warm and meaningful and our intention is to continue to "Serve the Present Age" as the plaque in our porch proclaims. Whilst we praise God for all that is past we also thank Him for all that's to come.

Janet Taylor

Post Script

We probably make more use of post boxes in December than all other months combined. My (very minor) interest in post boxes came about whilst hiking in the Brecon Beacons several years ago.



The walk leader had become excited on seeing a very small wall mounted box, designated “GR”. Why the excitement? He explained that it was the absence of the “V” or “VI” in the cypher, adding that “there was no guarantee of there ever being another King George”.

Pillar and post boxes have quite a history of their own. In the beginning, Royal Mail’s district surveyors would issue instructions to a local iron foundry to cast boxes. The earliest had vertical slits and were green. The first box was installed in Carlisle in 1853. The oldest still in use is in Framlington, Suffolk, dating from 1856.

The most famous early design was by John Penfold and were copied for use in India, New Zealand and Australia. They were hexagonal in shape and with some “fancy bits round the top”. Other boxes were designed to fit in walls, on lamp posts and from 1896 on wooden posts. These last might be the “Ludlow box” made of wood and lighter to produce. No pillar boxes were erected for King Edward VIII (he was never crowned and thus there was no cypher). The Queen’s cypher EIIR was first used in 1952.

Post post script. There is an operational Penfold hexagonal box at the bottom of Brook Street in Ilkley. It is a replica but rather handsome. However, if you choose to post your Christmas mail there, beware the slit! It measures only 6” x 1½” – smaller than many envelopes!



Gordon Mellor

What's on:

CHRISTMAS ACTIVITY MORNING FOR CHILDREN

19th December 10.00- 12.00

in the Activity Room

There will be lots of fun with Christmas craft and games to enjoy and the opportunity to explore the good news of Christmas in a new way.

Saturday 2nd December:

- 9.00 'Get in the picture' Nativity and
- 10.00 Carol Singing at the Farmers' Market
- 2.30 Adel Methodist Church hall – Carols for Christmas
Wesley Singers...£7 (includes afternoon tea)
- 3.00 Nativity play in the grounds of Kirkstall Abbey hosted by
local C of E churches (also Sunday 3rd at 3pm)

Sunday 3rd December:

- 6.00 Advent Service at St Margaret's Church (Candlelit) (HCT)

Saturday 9th December:

- 4.00-4.30 Carols in the Park (HCT)

Wednesday 13th December:

- 7.30 Carols and Faith Supper at David and Barbara's

Tuesday 21st December :

Carols in the Pubs (see HCT website)

REFUGEE ART and PHOTOS:

to December 16th.. Thursdays, Fridays and Saturdays only.

Rob Stothard "The Seamed Zones"...the everyday life of Immigrant Removal Centres in the UK. Challenging images on show at the White Cloth Gallery, 24 Aire Street, Leeds. LS1 4HT

Sunday 24th December:

6.00 Christingle Service – come and join the big band, themed window displays, glow necklaces.

Monday 25th December:

10.30 Christmas Family Service – children to bring a toy.

Wednesday 10th January

7.30 Wednesday Break at David and Evelyn's – Mark Godfrey

Wednesday 24th January

7.30 Wednesday Break at Chris and Christine's – Ruth Symons

Regular Events (contd)

Friday

7.45 Choir Rehearsal 0113 258 9093

Walking Groups: **Thursday** 0113 228 8334

Saturday 0113 258 6316

From the Editorial Group

Note that the Editorial Teams alternate..... n.b. the February Issue will be prepared by Gill Jewell and you should send items to her no later than 5pm on Wednesday 24th January.

Please include dates up to Sunday 4th March.

Gill Jewell gillpj.63@gmail.com 0113 278 9438

Gordon & Mary Mellor jgkm64@gmail.com 0113 258 6199

Paul & Jenny Redfearn home@paulandjen.co.uk 01423 530050

Email (or copy as an attachment) would be appreciated!

Please note that Grove Vine is published on line.

Premises Manager: Alan Firth
43 New Street, Horsforth, Tel: 258 2742 or 07985745525
grovebookings@gmail.com
Off duty from Saturday noon and all day Sunday

<http://www.grovemethodist.org.uk>

Registered Charity No 1129305