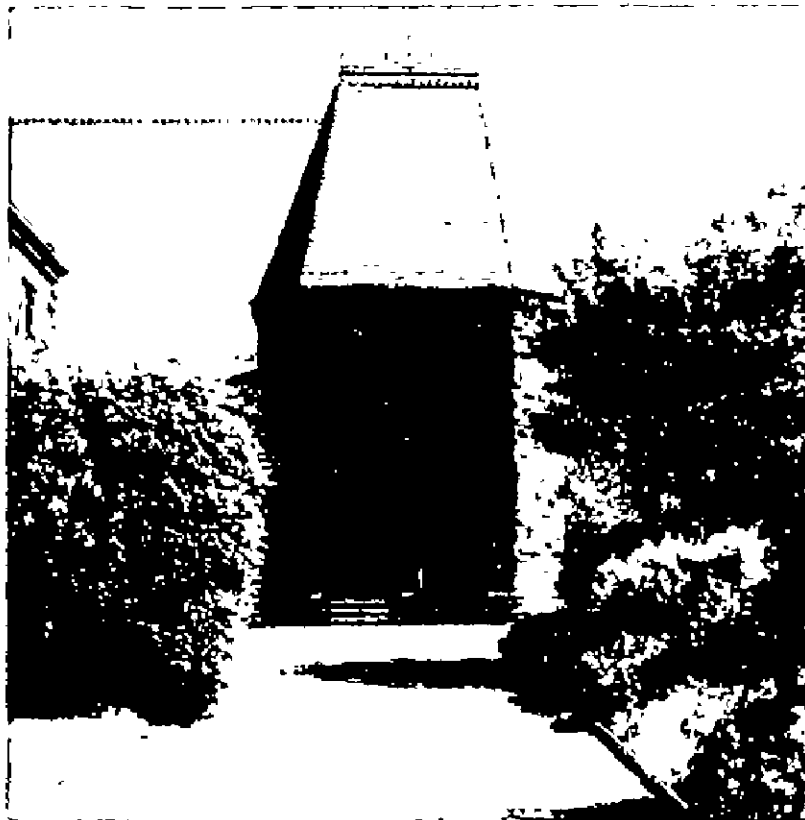


ANNUAL REPORT
Year ending
31 August 2011



GROVE METHODIST CHURCH
HORSFORTH, LEEDS
Registered Charity No. 1129305

It has been one of those years.

Illnesses, deaths and hard, hard work.

From time to time, folk must have wondered why they are doing it all.

The answers are contained in this book.

The reason being that despite illnesses, deaths and exhaustion the work of God has gone forward.

What you will find in here isn't as exciting as the Acts of the Apostles, but it is the latest chapter in that book, insofar as it reflects on the life of God's people and their struggle to see God's mission enacted in the Grove in particular and Horsforth in general.

If you read the Acts of the Apostles you will come across illnesses, death and hard, hard work, and the result of all that is that we are here today, 2365 miles from Jerusalem, over 2000 years from Christ's birth.

If you look in these pages, you will find the work of God being carried out in a way that means that in centuries to come, new Apostles may look back on us and give thanks for the work that has been done in Christ's name.

Never believe that what we do does not matter, does not have long term impact.

When lives are improved, when people know themselves cared for, when prayers are said, when food is served, when children are nurtured, when hope is shared and these and more for God's sake, then there is impact in the short, medium and long term, because lives are changed.

When lives are changed, effects spread. When God enters lives, the world is changed.

What we do here has truth and meaning and long term value, for God is with us.

The best of all is, God is with us. (*John Wesley, 2nd March 1791*)

Reverend Alistair S Jones

AIMS AND ORGANISATION

The aims of the church are set out in its **Mission Statement** as follows:

The Grove Methodist Church is called to respond to the Gospel of love in Jesus Christ and to live out its discipleship in worship, service and mission

In seeking to live out our mission statement we are committed to:

Worship - which takes into account the needs of the whole church family, preserving all that is good from the past while being open to the new.

Fellowship - which seeks to make all welcome, builds up our faith and enables us to care for one another.

Spirituality - we believe that Bible Study, Prayer, Worship, Giving and Service are vital as we seek to order our lives on the pattern of Jesus.

Serving God In the World - seeking to live out our faith where we work and live, witnessing by word and deed in the local community, fostering interest in world affairs, world-wide mission and seeking to enhance the lives of those in our neighbourhood.

Working together - committed to the whole Church of God and seeking greater awareness of and co-operation with, other faiths and denominations within our community.

Evangelism - sharing our faith in Jesus Christ with others and bringing them into fellowship.

Secure Foundations - ensuring that we have a sound working base since our commitment to worship, fellowship, spirituality and service requires us to provide premises that are structurally sound, well maintained and underpinned by effective finance.

The church seeks to carry out its stated aims and objectives through:

- Sunday and other acts of worship.
- Various meetings for prayer, fellowship, Bible study and outreach.
- Membership of Leeds (Wesley) Circuit (16/07).
- Membership of Horsforth Churches Together and support of its activities.
- The Church Council and its appointed Committees, which act under its direction.

Review of progress and achievements

Following completion of the three-year church generated programme 'Looking-to-the-Future' and its subsequent review 'The Way Forward', the year 2010-2011 has been something of a time of consolidation and preparation for moving ahead in coming months with further activity under the Church Mission Statement.

Throughout the year much of the church's work has been sustained and, as outlined below, actions taken in line with church aims. However, the year has been dominated by the settling-in of the new minister and, as outlined in last year's report (Financial Review page 14), by careful endeavours around a four point financial plan to correct the imbalance between income and expenditure. Further comment on this is made later in the Financial Review for the year.

Worship

- Against a national background of falling numbers of people attending worship, Sunday services at The Grove have been sustained at levels averaging 125 as evidenced by the October census. These services have retained quality input from a well-supported church choir and a rota of skilled organists under the direction of the Musical Director. High spots in the year that have brought into the church well above the average number of worshippers are those services linked to the festivals of Christmas and Easter. Numbers are also considerably greater for each monthly Family Parade service.
- Throughout the year worship has been enhanced through the appointment of specially selected preachers for particular occasions. These have included the Rev. David Hall for the

Church Anniversary, the Rev. Peter Shilling, famed for Seaside Mission, leading services to mark the start of Lent and celebration of the King James Bible, Mrs Jannine Ebenso on World Mission Sunday and on Mission in Britain Sunday, the involvement of Leeds Emmaus Group who work with the inner city homeless.

- In conjunction with our sister church, Central, the Trustees have provided a range of types of worship that has included traditional services, all-age worship, mid-week opportunities for reflection and the celebration of Holy Communion, Taizé and Ranters services. Each has proved effective in attracting and meeting the needs of different congregations.
- Towards the end of the year the Musical Director was granted a six month sabbatical period since which time the music of the church is being capably co-ordinated by the church's previous and well-experienced duo of choir master and organist.
- In line with the provisions of the Disability Discrimination Act, 1995, the church sound system has been fully overhauled and provision of the loop system extended to cover the Small Hall in the Grove Centre. This has been the first year of use and, from feedback, has been greatly appreciated by premises users.

Fellowship

- Successful efforts to increase church communication have included an overhaul of the distribution network for The Grove Vine, the monthly church magazine, to include all members of Uniformed Organisations and taking steps to ensure that items relevant to the more extensive readership can be included in the publication. In addition, copies are now made available for all Centre and premises users and are posted on the church's web site.
- Mid-year was a time for making a new appointment to the post of Church Webmaster. The new appointee took the opportunity to *overhaul the current website*. *Favourable comments* have been received about the quality of information provided and the site has led to several enquiries from web users beyond the church about aspects of The Grove.
- Throughout the year the bond of fellowship within the church has been sustained by regular on-going activities. The strongest of these includes the Luncheon Club with an average

weekly attendance of 35, the Flower Guild providing 150-200 flower arrangements for distribution to adherents and beyond and Grove Weekday and Weekend Wanderers organising regular rambles throughout the year.

- Fellowship remains strong within all church groups across a full span of ages. In addition to those already mentioned these include Women's Fellowship, Ladies Group, Wednesday Break, Uniformed Organisations and Studio Dance SNYG (Sunday Night Youth at The Grove).
- The successful annual fellowship break involving 40 or so church and circuit members and adherents was held at Raven Hall between 8th - 13th May 2011.
- The welcoming atmosphere at the weekly Tuesday Coffee Morning attracts 50-60 visitors including members from the local Adult Learning Centre. Modestly priced refreshments raise funds for the church and other charities, in particular this year for Oxford Place Children's Centre, Leeds, and Hearing Dogs for Deaf People, both of whom are grateful for the support received.
- In a further attempt to enhance contact between church and young people's groups the Senior Steward has visited Tots & Tykes and Pre-school, both of whom participated in the handwritten St. Mark's Gospel, with the completed transcript so that contributors might view their entries. In addition Brownie groups who contributed have visited church to see their Gospel entries.

Spirituality

- In accordance with Council wishes all church committees and activities held throughout the year have contained elements of prayer, Bible reading or worship as a reminder that we order our lives on the pattern of Jesus.
- Following tradition, the annual Covenant Service was held in January and was the opportunity for members and adherents to renew their commitment to Christian discipleship. In order to emphasise the liturgical significance of the occasion, the Trustees have planned to move the service next year (2011-2012) to September, to coincide with the start of the new Methodist Year.

- The church has continued to provide specific weekly opportunities for prayer and Bible study that are open to all interested parties and has sustained successful groups throughout the year.
- Regular praying by individual members and adherents has been encouraged by providing names, for whom permission has been given, as a focus for prayer in the weekly newsletter and monthly magazine.
- Use of the leaflet 'Grove Methodist Church: Praying for each other' has been promoted amongst church members and adherents requesting inclusion, with the aim of providing a daily prayer focus.
- In addition Grove members have been encouraged to join one of the ecumenical Lent Groups organised by Churches Together on the theme 'Biblefresh: looking at different parts of the Bible'.
- Taping of church services has enabled worshippers who are unable to attend services to benefit at times other than Sunday.
- Opportunities for private reflection and study are provided through encouraging individual use of prayer materials, particularly the Methodist Prayer Handbook and the Leeds Lent Prayer Diary, individual use of daily Bible notes obtained from the International Bible Reading Association, Scripture Union or Campaign for World Revival, and the sale of spiritual magazines such as Magnet, the Christian magazine nurturing faith in thoughtful, challenging ways.

Serving God In the World

- On 30th October an enjoyable reunion was held for young people who had supported the successful Summer Holiday Club around the theme 'Rocky's Plaice', a focus on the life of Peter.
- The regular August Holiday Club proved successful with around 20-25 children taking part in 'Mission Rescue', the story of Moses, that involved 'top secret' activities during which our minister in his many disguises attended each day!
- Uniformed Organisations have flourished throughout the year with 250 young people enjoying Rainbows, Beavers, Brownies, Cubs, Guides, Scouts and Explorer Scouts supported by enthusiastic and hard-working leaders.

- Studio Dance SNYG continues to provide a regular focus for young people with an interest in dance performance. It is a small but enthusiastic group of dancers who have contributed to events such as 'Treasures Revealed'.
- Church outreach through the Church Welcome Pack that *contains information about community as well as church facilities*, has been updated throughout the year and copies distributed to new neighbours moving into their area, with positive feedback.
- The church's on-going 'Change-for-Change' charity appeal aimed at collecting loose change for charities across two-month periods has been successfully maintained throughout the year. Donations have been sent to Bible Society (£20.20), Leeds Oxford Place Children's Centre (£70), St George's Crypt, Leeds (£100), Yorkshire Air Ambulance (£65), Leprosy Mission (£54) Methodist Homes for the Aged (£30) and Tent of Nations, Bethlehem (£76.37).
- This year the Luncheon Club has built upon its weekly success by providing three special Sunday lunches across the year that have been used to raise additional funds for charitable organisations (£200) and church funds (£525).
- Tots and Tykes remains the church's biggest outreach to young families in Horsforth and beyond by drawing together on a weekly term time basis an average of 50 children ranging from newly born to 3 years old and their parents, grand-parents or carers. Marks of their achievement are the organisation of Mothering Sunday activities that bring together sizeable numbers of past members and their families and regular donations to church funds, particularly this year the £3000 raised at the Tots and Tykes auction.
- The Pre-School has continued to successfully support up to 20 children, aged 2 – 4 years, in their learning through play and structured activities in a caring Christian environment. The effectiveness of Pre-school provision is attested to by the award of an Inclusion Chartermark and a good OFSTED inspection report.
- Having effectively maintained the Church Benevolent Fund, 50% of its reserve was allocated for use in support of relief work undertaken by the Methodist Relief and Development Fund.

- Other on-going service by the church as a whole in our wider community involves effective support for Fund for World Mission, World Church Fund, Christian Aid, Methodist Homes for the Aged, Action for Children, Mission Aviation Fellowship and the Horsforth Live at Home Scheme.
- Specific groups within the church (Flower Guild, Wednesday Break, Women's Fellowship, Tots & Tykes, Ladies Group) have provided financial support to registered charities at a local, national or international level.
- The weekly Tuesday Coffee Morning has continued to prove a successful outreach by maintaining a meeting point for the immediate neighbourhood and beyond, a strong sense of fellowship and a means of raising funds for charitable purposes. A special Coffee Morning in May raised the wonderful total of £226 for the Leeds Oxford Place Children's Centre.
- In terms of raising general political awareness Wednesday Break organised an open meeting for all those interested in hearing the local Member of Parliament, Stuart Andrew, speak about his first seven months in Westminster.
- The church reiterated its commitment to supporting needy communities throughout the world by continuing to provide Fairtrade products at church meetings.

Working Together

- In upholding the wider Methodist Connexion donations were made to the Methodist Church Fund for Property, the Fund for Support of Presbyters and Deacons and the Methodist Ministers' Housing Society.
- In May friends and members hosted the Leeds District Synod on church premises. The typical hard work and good will of church members and adherents made the event a success that resulted in favourable comments from the District Chair and the Circuit Superintendent and the overall commendation "Circuit and District are proud of you."
- At Circuit level the church has shown its commitment to working together by promoting the Circuit Banquet in March, hosting the Circuit Service in March, and supporting services across the Circuit in September, October, January, February, April, May and July. In addition members contributed to the Leeds Wesley Circuit 3D piece of Biblefresh artwork on the theme of 'the

Parable of the Sower' that was displayed at the May Synod and subsequently in churches across the Circuit.

- **Opportunities were provided for church members to attend cross-church Lent study meetings. During Holy Week The Grove collaborated effectively with other local churches to organise and participate in a programme of daily evening services.**
- **The church continued its backing for events connected with Leeds Hope/Church in the Park, a local response to the 2008 national inter-church outreach programme. Besides financial assistance, church adherents supported activity events on three Sundays when 'crowd pulling' activities such as live music and barbecue were held. Responses from those attending were very positive.**
- **Successful involvement with other churches in the neighbourhood included Churches Together Celebration Service in Horsforth Park, Hope in the Park events, distribution of Churches Together Christmas Cards, support for the United Easter Morning Dawn Service, Horsforth Litter Pick, Churches Together Advent Service, carol singing around the neighbourhood and the Civic Service.**

Evangelism

- **The Grove observed 'Treasures Revealed', open days during which visitors were encouraged to enjoy a leisurely look around the building, to examine the church's handwritten St. Mark's Gospel and other exhibits, to watch dance demonstrations by the young people and to listen to organ recitals and Bible readings. The days attracted a steady stream of visitors who expressed their appreciation at the opportunity provided to enter the church and browse quietly.**
- **Successful outreach events involved carol singing in Town Street with Churches Together, the Good Friday Walk of Witness and outreach to young people and children during the Horsforth Gala under the title 'Churches Together in the Park'.**
- **As further support for outreach activities at the gala a donation was made towards the cost of running the Christian events.**
- **Support from the church helps to finance effective work in local high schools through Leeds Youth Cell Network.**

- At the request of the Trustees, the church began the process of exploring possibilities for the creation of 'safe space' for the young people of Horsforth, with an experienced youth worker who is seeking to take on the role of Horsforth Missioner.
- Attendance at the monthly Family Parade services has remained high with congregations sometimes double that of other Sundays. Preachers have made use of modern audio-visual equipment and an orchestra made up of adults and young people provides the music and is much appreciated by worshippers.
- This has been the first year of the church's newly overhauled web site with appreciable improvements to quality and content. Not only does the site enable wider public access to details of worship opportunities but provides information about meetings and activities that might be of more general interest. The Church Magazine and weekly notice sheet are accessible on the site. It has resulted in several requests for details concerning aspects of church life.

Secure foundations

- Regarding finance, the church has been aware that there was very little money available for major project works on the building. Nevertheless the church and its organisations continued to make donations to outside charitable bodies as listed below.
- The year has seen an effective four pronged approach to securing a sound financial base for the church that has involved review of regular giving, fund raising and efficiencies at church and circuit levels. The result has been the production of a surplus that can now be used to undertake proposed work on property maintenance (See below 'Financial Review').
- In addition to income details outlined below, the Winter Concert Season organised by the Director of Music was supported by many outside the church and was a major fund-raiser. Particularly well attended concerts were those given by the City of Leeds Youth Orchestra, Leeds Youth Wind Band Ensemble, and by Craig Ogden, the internationally renowned guitarist. Proceeds for this series have been used to supplement general church funds.

- Having costed the church's energy use, ways have been sought to reduce energy bills and the church has become a member of the Community Fundraiser through Utility Warehouse Discount Scheme thus receiving donations on the basis of its bills.
- In ensuring that the building provides the secure base that is needed for our work in the community regular maintenance and improvements are made. This year this has involved commencement on improved storage facilities for the Centre kitchen.
- Having experienced leaks from a small expanse of flat roof ineffectively relaid at the time of the refurbishment of the Community Centre, the church has continued to spend much time and energy seeking a solution to the problems so as to secure sound premises.
- Moves have continued to sustain the church's environmentally friendly approach. Measures taken during the year towards energy saving include replacement of light bulbs with lower wattage lighting, use of a range of environmentally friendly cleaning products, recycling kitchen waste into the church compost heap, re-siting the evening services during winter months, organising the use of recycling bins and raising awareness of the waste produced by using products supplied with unwanted packaging.
- In terms of greater administrative efficiency, the electronic web-based booking calendar able to generate daily agendas and room bookings, has been successfully used.
- A mark of the quality of welcome and accommodation provided for site users has been the high use of the premises by the many church and outside organisations throughout the year.

Progress on any special projects

- The Circuit having negotiated the sale on leasehold of Grove House, the old Grove Manse, during the year, the Trustees were requested to approve the sale and are consequently in the process of establishing working relationships with the new owners as the church's nearest on-site neighbours. In July many members and adherents supported an open day organised by the new owners to view the recently refurbished Georgian property.

- **Horsforth Live at Home Scheme** has been a special project that has been running for several years. It is aimed at supporting the independence of elderly people in their own homes and currently supports 487 members. This year the church has given financial help and in addition, some of the harvest gifts collected in October 2010 were distributed to the scheme.
- The local Bible Society (Leeds Action Group) Secretary organised a viewing of the newly published Freedom Bible for adults and young people from the church. This complemented other activities across the year aimed at raising general Bible awareness including the handwritten transcript of St Mark's Gospel and the exhibition and sale of Bible reading notes.
- **Harvest: Gifts of produce** were collected for distribution to Horsforth Live at Home scheme, as well as to the regular recipient Caring for Life, a charity working with vulnerable adults in neighbouring Cookridge. In addition the Methodist Relief and Development Fund was chosen as a focus for other giving and £282.01 was donated.
- The church's special Christmas project was in aid of St George's Crypt, an inner city project aimed at supporting the homeless of Leeds. Besides gifts of shampoo, soap, bubble bath, toothpaste etc. a donation of £100 was made and their grateful thanks received.
- Over the year awareness has been raised about the ever-present tensions of living in Israel-Palestine through talks, displays, worship and charity appeals. In response £304.37 has been raised in support of Tent of Nations, an international peace organisation based south-west of Bethlehem, Palestine, and aimed at modelling peaceful co-existence with all neighbours irrespective of race, religion or nationality under the slogan of 'building bridges between people of different backgrounds'.
- The year has been dominated by the smooth transition through careful planning and organisation of our new minister who began his spiritual and pastoral responsibilities on 1st September.

Church's response to important events

- 2011 being the 400th Anniversary of the publication of the King James Bible, part of the church's celebration was participation

in a series of discussion groups organised by Horsforth Churches Together under the theme of 'Biblefresh'. Another strand was the organisation of members, adherents and premises users to write by hand and verse by verse, St Mark's Gospel. The assembled book was then exhibited and read aloud at the Leeds project 'Treasures Revealed', an initiative aimed at opening churches on specified days. Celebrations were also marked by a memorable weekend of worship and study led by the Reverend Peter Shilling.

- In April, the church hosted a Churches Together Election Hustings so that voters might question and hear candidates standing in the forthcoming local election.
- As an immediate response to the Food Crisis in Africa the church collected £1,500 which was donated through the Methodist Relief and Development Fund East Africa Appeal.
- The church has been mindful of specific world economic situations and throughout the year has continued to emphasise its commitment to serve Fairtrade goods at all church meetings with a choice of other products on request.

Value of the church not in monetary terms

- The range of activities and services outlined above are evidence of the church's particular impact on its immediate locality and the residents whether they are Methodist members and adherents or non-church neighbours. The outline above of the scope of the church's interest and support also indicates a positive, if less direct, influence at national and international levels in a wide number of areas.
- The church continues to offer a welcome place of lively and varied worship, geographically placed at the heart of Horsforth. Our well-maintained and attractive premises are extensively used by church groups and the wider community throughout each week.
- The church community continues to offer the opportunity for spiritual growth to young and old alike, pastoral care to one another and those outside the church and continues to explore new ways to reach out in mission.
- Above all it seeks to provide a pattern for living that responds to the gospel of God's love in Jesus Christ by following a life of discipleship through worship, service and mission.

Financial Information

In addition to the financial activities carried out by the church outlined in the financial accounts, response has been made by the church and its associated groups to appeals and charities across the year, listed on page 26.

The accounts provide details of major transactions for the year 2010 – 2011.

These include the Circuit Assessment for the church, which was £56,344. This is a major and ongoing expenditure for sustaining and supporting the ministry and work of the Leeds Wesley Circuit of which The Grove is one of nine constituent churches.

This Annual Report outlines the widespread range of events and activities that the church has provided across the year 2010 – 2011. These would not have been possible without the very many hours of dedicated service and voluntary help that have been given by members and adherents. The Trustees would like to thank all volunteers for their interest, time and energy that has enabled the church to respond in such a positive way to the gospel of God's love in Jesus Christ within this community.

TRUSTEES ANNUAL REPORT FOR THE YEAR ENDED 31st AUGUST 2011

Administrative Information:

The Grove Methodist Church, Horsforth, is a registered charity number 1129305. It is governed by the Methodist Church constitution set up by Act of Parliament and by the Constitutional Practice and Discipline (CPD) of the Church as amended from time to time by the Methodist Conference.

Correspondence for The Grove Methodist Church should be addressed to the Rev. Alistair Jones, The Grove Methodist Church, 7 Fraser Avenue, Horsforth, Leeds, LS18 5EA.

The Managing Trustees compose the Church Council and for the year ending 31st August 2011 those who have served are as follows: Carole Abel, Philip Abel (Treasurer), Brian Ball, Kay Bassett, Anne Blackburn, Margaret Bosomworth, Barbara Buckley, David Buckley, John Bussey (from 1st May), Kathryn Bussey (to 30th April), Judith Chaplin, Jean Douglas, Eric Douglass, Linda Douglass, Alan Firth, Jean Fox, Betty France, John Hardaker, Cynthia Hatton, Ricky Hearn, Margaret Heaton, Wilf Hoyle, Anne Jackson (Circuit Representative to 1st February), Rev. Alistair Jones (Chair), Andy Longstaff (to 2nd February), Gill Marley, Janette Mawson, Peter Mawson (Secretary), Gordon Mellor, Mary Mellor, Jack Myers, Jean Orton, Sylvia Parker, Cynthia Quayle (Circuit Representative from 2nd February), David Quick, Chris Shagouri, Margaret Simmons, Jeanette Speight (to 2nd February), Kathleen Taylor, Andy Walker, Betty West, David Whiteley, Sally Wolfe.

One Trustee is an employee and receives benefits from the Charity in fulfilling his duties.

Independent Examiner: Mr Christopher W. Turner F.C.A.

Bankers: Yorkshire Bank plc, Horsforth

As at 4th April 2011 there were 192 church members. Following an overhaul of church records details of a further 102 people are placed on the church data base and 506 on the community roll.

Objects and Activities

These are set out in detail on pages 2 to 14

Financial Review

How pleasing to be able to report a financial surplus for the year! The Statement of Accounts shows that we have increased our income whilst being able to contain our expenditure. Daily references on the news bulletins to the 'economic downturn' indicate that church members will not have been immune. Yet, as on so many previous occasions at the Grove, we have seen a very generous level of support.

We have embarked on a series of steps, planned to arrest the earlier decline in our financial position. These have proved to be successful and we hope for further benefits to come. Collections and Pledged Giving (with Gift Aid) provide us with the major commitment in our income and we hope that the improvement can be maintained. And it is right that we applaud the remarkable contributions from special fund - raising events; general donations and the hiring of our premises.

Checks on our expenditure are just as important and we expect some benefit there in 2011/2012, along with further help from our changed supplier of utilities. As always, the maintenance of our premises will be able to absorb whatever we can afford!

Caution says that we must not become complacent and we must remain aware of our financial situation. Even so, it is right that we should feel much encouraged this year.

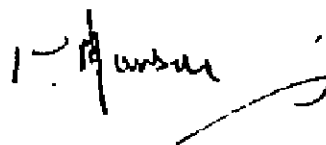
We have been very grateful beneficiaries of a substantial legacy (£13,100). This sum has been placed on reserve, providing in part for any significant and unexpected liability.

Reserves Policy

The General Fund comprises the unrestricted reserves of the church. Our Reserves Policy is that we aim to accumulate the equivalent of three months potential expenditure. Currently that would be £26,000. We are confident that the General Fund can satisfy that requirement at the present time.

Approved by The Grove Church Council on 9th February 2012 and signed on its behalf by Peter Mawson, Secretary to the Church Council.

7 Fraser Avenue,
Horsforth, Leeds, LS18 5EA

A handwritten signature in black ink, appearing to read 'Peter Mawson', with a long horizontal flourish extending to the right.

INDEPENDENT EXAMINERS REPORT TO THE TRUSTEES OF THE GROVE METHODIST CHURCH HORSFORTH

The report is on the Church Funds for the year ended 31 August 2011 which are set out on pages 19 to 25 and in respect of an examination carried out under section 43 of the Charities Act 1993.

RESPECTIVE RESPONSIBILITIES

As trustees you are responsible for the preparation of the appropriate accounts. The charity's trustees consider that an audit is not required for this year under section 43(2) of the Charities Act 1993, and that an Independent Examination is required. It is my responsibility to examine the accounts under section 43 of the 1993 Act, to follow the procedures laid down in the general directions given by the Charity Commission, and to state whether particular matters have come to my attention.

BASIS OF THE EXAMINERS REPORT

My examination was carried out in accordance with the general directions given by the Charity Commission. This examination includes a review of the accounting records kept by the charity and a comparison of the accounts presented with those records. It also includes consideration of any unusual items or disclosures in the accounts and seeking explanations from you as trustees concerning such matters. The procedures undertaken do not provide all the evidence that would be required in an audit and consequently no opinion is given as to whether the accounts present a true and fair view and the report is limited to those matters set out in the statement below.

INDEPENDENT EXAMINERS STATEMENT

In connection with my examination, no matter has come to my attention:
(1) which gives me cause to believe that in any material respect the requirements to keep records in accordance with section 41 of the 1993 Act and to prepare accounts which accord with the accounting records and to comply with the requirements of the 1993 Act, have not been met.
(2) However the trustees should be aware that the accounts do not include any amount for possible liabilities arising from the provision of employee housing and other benefits.



Horsforth 9th February 2012

CHRISTOPHER TURNER F.C.A.

BALANCE SHEET as at 31st AUGUST 2011

	Note	2011 £	2010 £
TANGIBLE FIXED ASSETS			
At Insurance Value:			
Freehold Property: Grove Premises		3,069,623	3,486,040
Organ		473,402	454,325
		<u>3,543,025</u>	<u>3,940,365</u>
At Cost less Depreciation:			
Fixtures & Fittings	1	4,312	6,468
		<u>3,547,337</u>	<u>3,946,833</u>
CURRENT ASSETS			
Sundry Debtors	2	9,274	19,798
Bank Accounts	3	50,958	10,960
		<u>60,232</u>	<u>30,758</u>
Less: Sundry Creditors	4	-7,573	-8,488
		<u>52,659</u>	<u>22,270</u>
TOTAL NET ASSETS		<u><u>3,599,996</u></u>	<u><u>3,969,103</u></u>
FUNDED BY:			
Restricted: Property Valuation Reserve		3,543,025	3,940,365
Designated: Trust 18633 Manchester		1,840	1,813
Benevolent Fund		257	334
Organ Fund		354	354
Property Fund		13,597	128
Unrestricted: General Fund		40,923	26,109
		<u>3,599,996</u>	<u>3,969,103</u>
		<u><u>3,599,996</u></u>	<u><u>3,969,103</u></u>

Approved by The Grove Church Council on 9th February 2012
and signed on its behalf by Philip Abel, Treasurer.

Philip Abel

STATEMENT OF FINANCIAL ACTIVITIES

For the Year Ended 31 August 2011

	General Fund	Other Funds	TOTAL	LAST YEAR
Note	£	£	£	£
INCOME				
Collections & Pledged Giving	54,705	530	55,235	53,208
Tax Refund - Gift Aid	11,278	69	11,347	11,253
Hire of Rooms / Car Park	28,238	0	28,238	21,917
Use of Rooms by Church Orgs	4,800	0	4,800	4,496
Donations	9,158	13,100	22,258	6,029
Bank Interest	0	30	30	32
Project and Other Income	715	0	715	4,859
Promotional Goods / Events	9,472	0	9,472	1,687
	118,366	13,729	132,095	103,481
Unrealised Losses/Gains(Prop)	0	-397,340	-397,340	573,048
	118,366	-383,611	-265,245	676,529
EXPENDITURE				
Circuit Assessment	56,344	0	56,344	52,116
Subscriptions / Donations	200	307	507	1,434
Organ (Maint & Music)	1,651	0	1,651	1,623
Sundry Expenditure	5 3,387	0	3,387	4,037
Admin, Print & Stationery	6 2,504	3	2,507	2,595
Planned Maintenance	7 1,706	0	1,706	1,443
Project – Sound System	0	0	0	2,866
Property Maintenance	8 36,400	0	36,400	39,625
Outreach	1,360	0	1,360	1,320
	103,552	310	103,862	107,059
Surplus / (Deficit) for the Year	14,814	-383,921	-369,107	569,470
Reserves Br/Fwd:	26,109	3,942,994	3,969,103	3,399,633
Reserves Carr/Fwd:	40,923	3,559,073	3,599,996	3,969,103

STATEMENT OF FINANCIAL ACTIVITIES – OTHER FUNDS
For the Year Ended 31 August 2011

	Restricted	TMCP	Benevolent	Organ	Property	TOTAL
	Trust 18633	Fund	Fund	Fund	Fund	
	£	£	£	£	£	£
INCOME						
Collectns & Pledged Giving	0	0	230	0	300	530
Tax Refund - Gift Aid	0	0	0	0	69	69
Bank Interest	0	30	0	0	0	30
Donations	0	0	0	0	13,100	13,100
Unrealised Losses-Prop.	-397,340	0	0	0	0	-397,340
	-397,340	30	230	0	13,469	-383,611
EXPENDITURE						
Subscriptions / Donations	0	0	307	0	0	307
Admin, Print & Stationery	0	3	0	0	0	3
	0	3	307	0	0	310
Surplus / (Deficit) for Year	-397,340	27	-77	0	13,469	-383,921
Reserves Br/Fwd:	3,940,365	1,813	334	354	128	3,942,994
Reserves Carr/Fwd:	3,543,025	1,840	257	354	13,597	3,559,073

NOTES to the ACCOUNTS
For the Year Ended 31 August 2011

		2011	2010
		£	£
1. FIXTURES & FITTINGS			
Cost:	B/Fwd	11,690	11,690
	Additions	0	0
		11,690	11,690
		11,690	11,690
Depreciation:	B/Fwd	5,222	2,851
	Charge for Year	2,156	2,371
		7,378	5,222
		7,378	5,222
Net Book Value:		4,312	6,468
		4,312	6,468
2. SUNDRY DEBTORS			
Circuit Assessment (Paid Sep 2011)		0	14,086
Commercial Lettings		4,441	1,057
Insurance		630	929
Income Tax Refunds		2,460	1,830
Miscellaneous		1,743	1,896
		9,274	19,798
		9,274	19,798

NOTES to the ACCOUNTS (cont'd)
For the Year Ended 31 August 2011

	2011	2010
	£	£
3. BANK DEPOSITS		
Current Account	47,724	8,249
Collections Account	1,394	898
	<hr/>	<hr/>
	49,118	9,147
Trustees for MCP	1,840	1,813
	<hr/>	<hr/>
	50,958	10,960
	<hr/>	<hr/>
 4. SUNDRY CREDITORS		
HM Revenue & Customs	601	624
Planned Maint. (Small Hall Sound)	489	2,866
Miscellaneous	2,890	1,405
	<hr/>	<hr/>
	3,980	4,895
Architects Fee -- Grove Centre	3,593	3,593
	<hr/>	<hr/>
	7,573	8,488
	<hr/>	<hr/>
 5. SUNDRY EXPENSES		
Depreciation	2,156	2,371
Miscellaneous	1,231	1,666
	<hr/>	<hr/>
	3,387	4,037
	<hr/>	<hr/>

NOTES to the ACCOUNTS (cont'd)
For the Year Ended 31 August 2011

	2011	2010
	£	£
6. ADMINISTRATION		
Photocopier	1,893	1,978
Print & Stationery	611	614
	<u>2,504</u>	<u>2,592</u>
7. PLANNED MAINTENANCE		
Church: Roof Repairs	764	1,005
Centre: Blinds	453	438
Kitchen Store	489	
Premise Man:	0	0
	<u>1,706</u>	<u>1,443</u>

NOTES to the ACCOUNTS (cont'd)
For the Year Ended 31 August 2011

	2011 £	2010 £
8. PROPERTY MAINTENANCE		
Prem Man: Salary	12,634	12,422
Repairs	288	158
Insurance	122	227
Telephone	339	280
Council Tax	1,174	1,158
	14,557	14,245
Church: Heat & Light	4,421	5,599
Repairs	533	780
Water	351	323
Insurance	5,439	5,026
	10,744	11,728
Centre: Heat & Light	6,037	8,623
Repairs	2,157	1,544
Water	1,288	1,112
Insurance	0	314
	9,482	11,593
Cleaning / Waste Disposal	1,617	2,059
Total:	36,400	39,625

DONATIONS – YEAR TO 31 AUGUST 2011

<u>Recipient</u>	<u>Value</u>
Methodist Relief and Development Fund	2,104.26
MAF	192.94
Ministerial Training Fund	258.24
The Leprosy Mission	1,663.21
Live at Home Scheme	450.00
Horsforth Churches Together	160.00
Oxford Place Children's Centre	362.12
Methodist Homes for the Aged	311.00
Tent of Nations	304.37
Leeds Youth Cell Network	750.00
Methodist Church Fund for Property	100.00
Fund for Support of Presbyters and Deacons	50.00
Methodist Ministers Housing Society	50.00
Action for Children (NCH)	944.09
Junior Missionary Association (JMA)	555.76
Bible Society	10.10
St. George's Crypt	170.00
Yorkshire Air Ambulance	165.00
Children's Barnardo's	50.00
Martin House Hospice	80.00
Rodley Nature Reserve	8.00
British Red Cross	50.00
Methodist Missionary Society	64.00
Solomon Islands (Helena Goldie Hospital)	150.00
Ovarian Cancer	150.00
Kenyan Orphans Support Trust	30.00
Friends of Settle/Carlisle Railway	25.00
Watoto (Shirley Crawford)	35.00
Diabetic Association	35.00
Childline	30.00
Hearing Dogs for the Deaf	150.00
	<hr/>
	£ 9,458.09
	<hr/>

WORSHIP

Our Sunday Services are held at

9.00 Holy Communion (first Sunday of the month)

10.20 Crèche

**10.30 Morning Worship
(Family/Parade Service first Sunday of the month)**

10.30 J Team (tots to 12s)

6.00 Evening Worship (alternate with Central Methodist Church)

Holy Communion is celebrated at morning and evening services as announced

Midweek Lunchtime Service

12.30 Thursday in the Grove Centre Small Hall

First Thursday in the month is a Service of Holy Communion

Activities

Sunday

7.30 (SNYG) Studio Dance Group

Monday

12.15 Luncheon Club

1.30 Network/Women's Fellowship

6.15 Beavers

6.15 Cubs

7.30 Scouts

7.45 Flower Guild
(3rd Monday in the month)

Tuesday

9.00-12.00 Pre-school

12.00-3.00 Pre-school

9.00-9.30 Prayer Meeting in Quiet
Room

10-11.30 Coffee in the Centre small
hall

6.00 Rainbows (5th Horsforth)

6.15 Brownies (5th Horsforth)

7.45 Guides (5th Horsforth)

Wednesday

9.00-12.00 Pre-school

1.30 Line Dancing

6.00 Rainbows (14th Horsforth)

6.15 Brownies (14th Horsforth)

8.00 Explorer Scouts

7.30 Wednesday Break (fortnightly)

Thursday

9.45-11.30 Tots & Tykes (0-4)

10.30 Bible Fellowship

6.15 Beavers

6.00 Cubs

7.30 Scouts

7.45 Grove Ladies Group
(1st and 3rd Thursday)

Friday

7.45 Choir Rehearsal

Walking Groups - monthly
*Usually meet at 9.00am in the
Parlour Car Park*

Thursday Wanderers

(3rd Thursday in the month)

Saturday Wanderers

(1st Saturday in the month)

Grove Methodist Church, Horsforth, Leeds
<http://grovemethodist.org.uk>